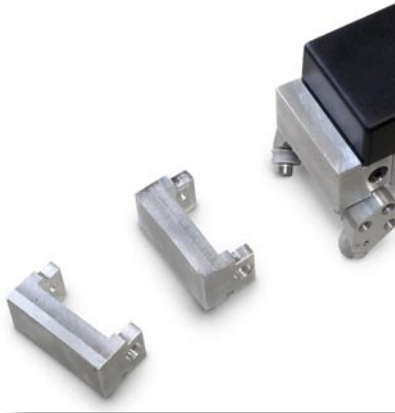


The Crash Tester features a "crash test" vehicle that is equipped with an on-board, high-g accelerometer to accurately measure the force of each impact. The vehicle's removable front end and interchangeable impact wall allows student researchers to design and test the impact absorbing characteristics of a variety of bumper materials and "fixed" guard rail systems.



Data Acquisition System

- A single axis high-g accelerometer measures and graphs acceleration forces during the impact.
- Speed is calculated before and after impact to determine impact forces.
- Data is streamed in real-time via RF telemetry for instant display.
- Computer software displays relevant data in a student friendly format for quick student analysis.

Crash Test Vehicle and Track

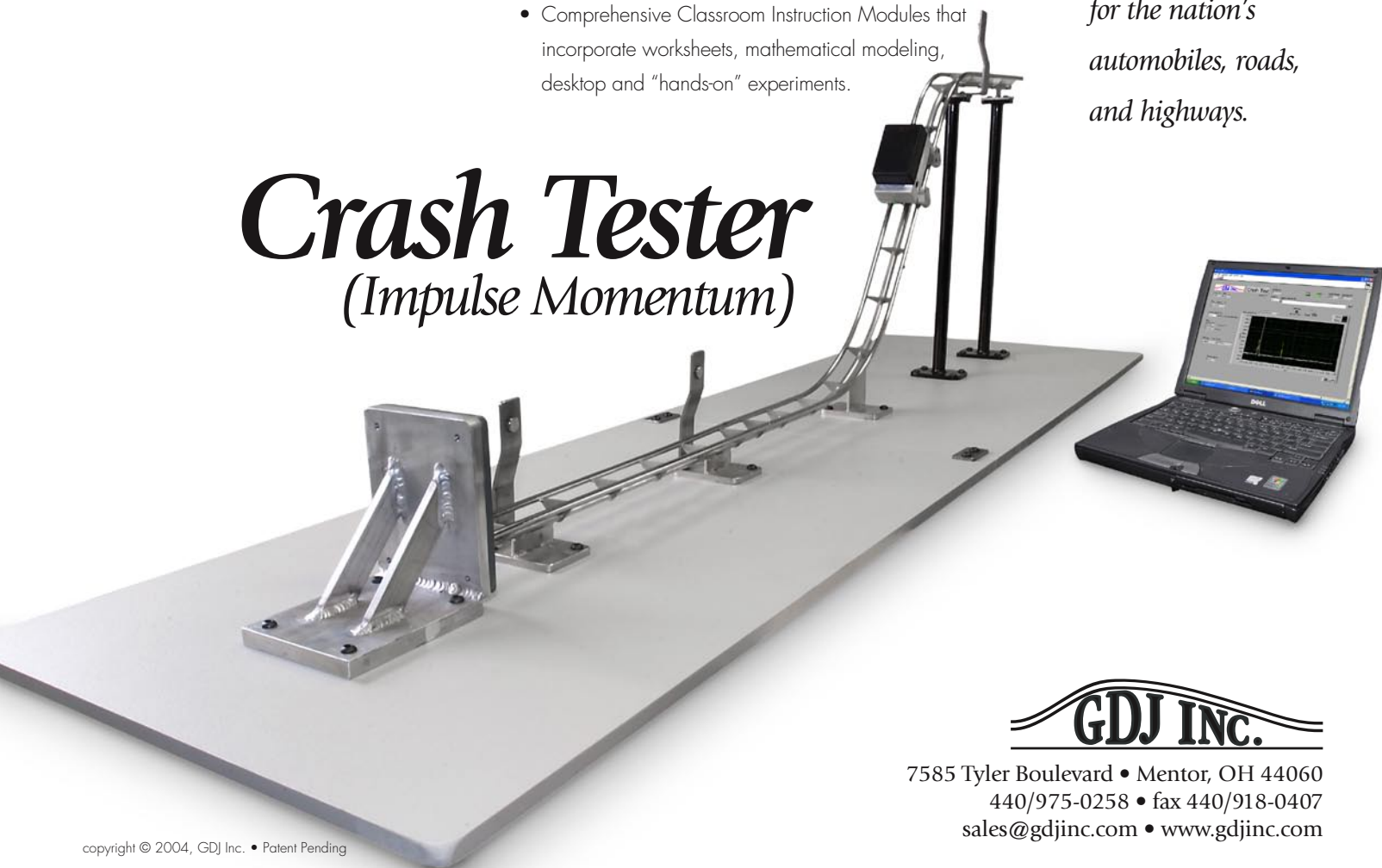
- Smooth, low friction track provides low loss to system
- Impact barrier with replaceable PVC plate can be adjusted for different crash conditions
- Modular front bumper system can be easily replaced to test the impact absorbing characteristics of a variety of materials. Four different bumpers supplied.
- Durable, high quality test vehicle and barrier are both designed for years of classroom/laboratory use.

Curriculum Features

- Comprehensive Classroom Instruction Modules that incorporate worksheets, mathematical modeling, desktop and "hands-on" experiments.

GDJ's Crash Tester features a computer-based, data acquisition system that allows students to conduct many of the same impulse momentum experiments that highway safety experts and automotive design engineers do when developing safety systems for the nation's automobiles, roads, and highways.

Crash Tester *(Impulse Momentum)*



GDJ INC.

7585 Tyler Boulevard • Mentor, OH 44060
440/975-0258 • fax 440/918-0407
sales@gdjinc.com • www.gdjinc.com